

INSTALLATION

CORNER MOUNT BRACKET SDCA001v2

CONTENTS

1. CONER MOUNT BRACKET 1EA
2. SET ANCHOR BOLT (W5/16) 8EA
3. M10 BOLT & NUT 4EA
4. MANUAL 1EA

A. Install on a Wall Bracket Kits

- a-1. First mark the positions of holes placing the corner mount bracket. (FIG.1)
- a-2. Make $\Phi 13\text{mm}$ 8 holes by drill. (Depth 37mm)
- a-3. Install SET ANCHOR BOLT on the holes. (FIG.2)
- a-4. Fix the wanted Wall Mount Kits on the corner mount bracket with 4 ea of M10 BOLT before you install the corner mount bracket. (FIG.2)
Screw the set anchor bolt of the bracket by nut on the wall.

NOTE Wall mount bracket use an inside hole of corner mount. (136*215.6)

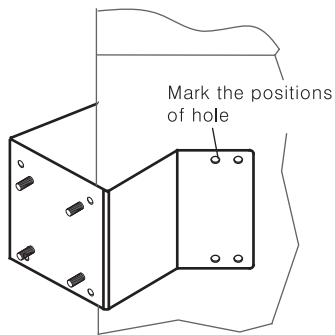


FIG.1

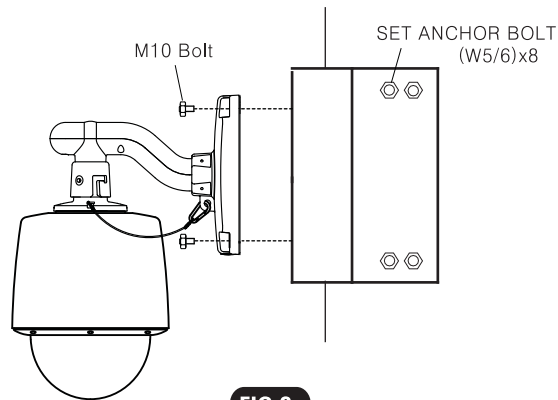


FIG.2

B. Install on a Junction Box

- b-1. First mark the positions of holes placing the corner mount bracket. (FIG.3)
- b-2. Make $\Phi 13\text{mm}$ 8 holes by drill. (Depth 37mm)
- b-3. Install SET ANCHOR BOLT on the holes.
- b-4. Fix the wanted Junction Box on the corner mount bracket with 4 ea of M10 BOLT before you install the corner mount bracket.(FIG.4)
Screw the set anchor bolt of the bracket by nut on the wall.(FIG.4)

NOTE Junction Box use an outside hole of corner mount. (186.8*256.8)

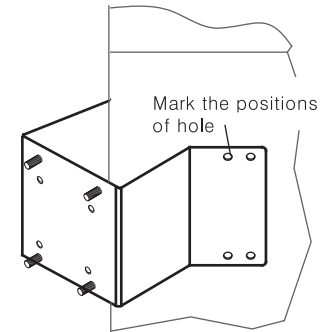


FIG.3

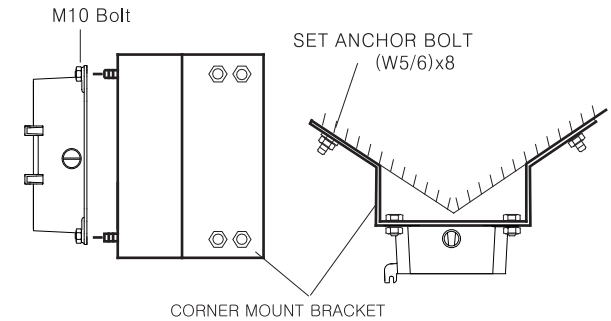


FIG.4

DEMENSION

